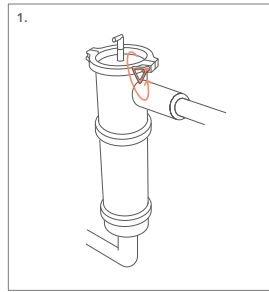
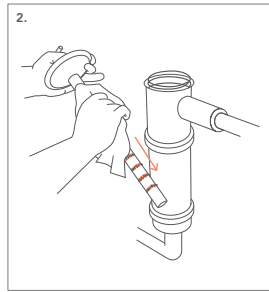


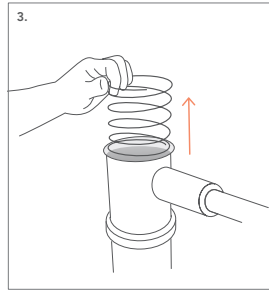
Maintenance



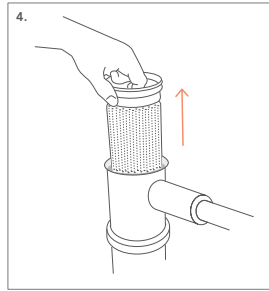
1. Close the inlet and outlet fittings. Open the KFE tap to release the pressure. Then open the bleed tap at the top of the filter. Unscrew the wing nut and remove the cap.



2. Remove the magnetic rod and clean it with a cloth, for example.



3. Then remove the pressure spring and clean it with water if necessary.



4. Now you can remove and replace the basket with the fine filter bag (spare part number 100454).

The assembly is done in reverse order.
The twister insert on the magnet bar should be directed towards the input, this will give you the highest capacity.

our water. safe.

Your contact:

© UWS Technologie GmbH - All rights reserved

Version 1

Reprinting, including individual passages, is prohibited. The copyright and all rights are held by UWS Technologie GmbH.

Translation, reproduction, storage and distribution, including transfer to electronic data carriers and storage in electronic media, is not permitted without prior written consent and is punishable by law.

No claims can be made on the basis of the information or illustrations provided.

We reserve the right to make changes in technology, form and equipment.

No liability is assumed for errors and misprints.

Instruction manual

MAGella® twister5 MAGella® twister10



Description

The dual filters of the MAGella twister series are unique, highly efficient system filters for magnetic and non-magnetic contaminants in heating systems. They include an absolute fine filter down to 1 µ and one of the most powerful magnetite filters on the market. With its magnetraw of 11 x 12,000 Gauss, the MAGella twister 10 is the strongest compact filter in the world. This is because the specified magnetic field strength acts on the outside of the magnet, unlike many other filters where the magnetic flux strength is specified at the centre of the magnet. The fine filter with pressure spring frees the heating system from even the finest dirt particles. With a flow rate of 5 or 10 m³/h, its use is also excellently suited for very large heating systems. The twister insert permanently distributes the volume flow and provides a retaining barrier for heavy magnetite particles. The stainless steel housing provides additional shielding against the high magnetic flux strength.

Technical data

| MAGella® twister5 and 10 | twister5 | twister10 |
|---|---------------|----------------|
| Art. no. | 100100 | 100101 |
| High-gloss filter housing made of stainless steel V4A | Edelstahl V4A | |
| Filter basket with seal to increase fine filtration | ✓ | |
| Pressure spring to increase fine filtration | D2 | |
| Flow rate max. | 5m³/h | 10 m³/h |
| Magnetic field strength | 6x12.000 Gauß | 11x12.000 Gauß |
| Shut-offs (included in delivery) | 2x 1 1/2" | |
| Connections | 1 1/2" | |
| KFE drain valve (included in delivery) | 1/2" | |
| Brackets for filters (included in delivery) | ✓ | |
| Vent shut-off with hose | 1/4" | |
| Max. temperature | 80°C | |
| Max. operating pressure 10bar | 10 bar | |

Safety instructions

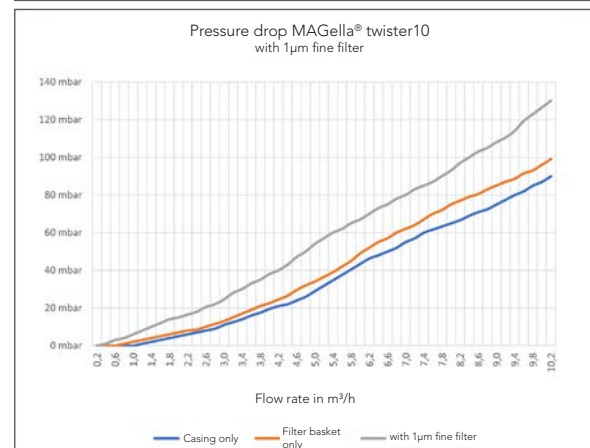
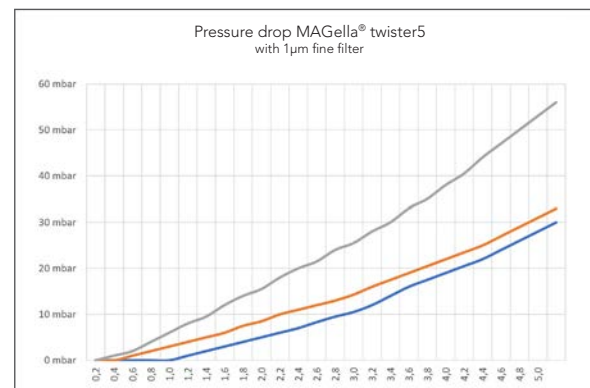


ATTENTION:
MAGella filters contain strong magnets. Stay away from electrical appliances, bank cards and other magnetic device.
MAGella filters contain strong magnets. Handle with care if you are a pacemaker wearer.



! MAGella filters are pressurised devices. The pressure must be released before any maintenance.
! The units can become hot during normal operation. Please handle with care.

Pressure loss curves

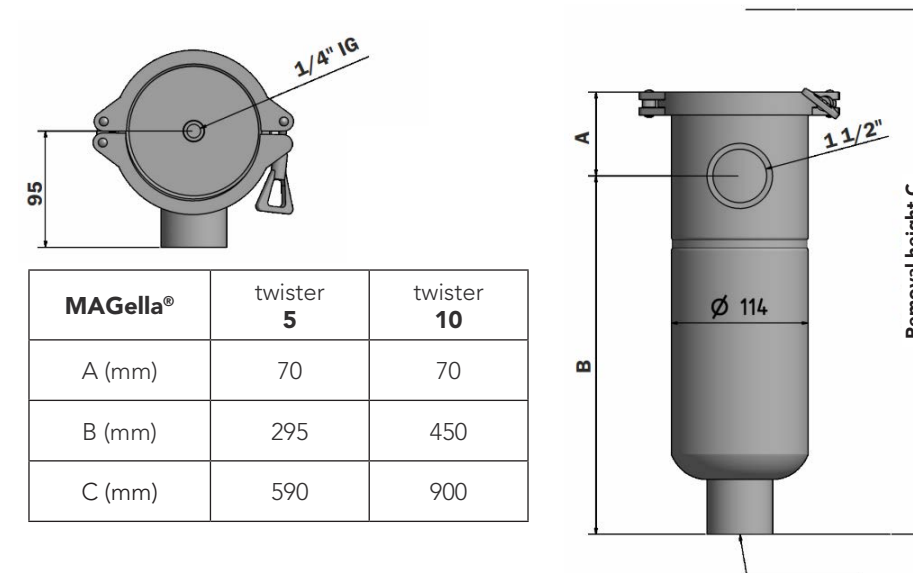


The higher the degree of contamination in the system, the greater the pressure loss. The diagram is based on a clean new filter element.

Your advantages

- ✓ Tool-free opening and cleaning of only one filter
- ✓ Magnetraw with 11 x 12,000 Gauss (twister10) or 6 x 12,000 Gauss (twister5) strength
- ✓ Twister insert for volume flow control with retaining barrier
- ✓ Absolute fine filter 1µ (0.001mm) with 90% separation capacity
- ✓ Sludge filtration (wet dirt)
- ✓ High-performance dual filter - predestined for large systems
- ✓ Ready to install
- ✓ Very high flow rate

Dimensions



| MAGella® | twister 5 | twister 10 |
|----------|-----------|------------|
| A (mm) | 70 | 70 |
| B (mm) | 295 | 450 |
| C (mm) | 590 | 900 |

Installation instructions

Tip: Ideally, you should attach the MAGella twister in the return flow according to the following scheme:

